



- **By car**

The hotel is located in the centre of Trondheim. Take a right turn when you cross the Bakke bridge.

- **By plane**

Væres Airport is 32 km from the hotel. The airport bus stops right outside the hotel every 15 minutes. There are good connections to all destinations in Norway from the airport, as well as a direct route to Copenhagen.

- **By train**

Trondheim Central Station is located approx. 400 metres from the hotel. There are departures to Bodø and Oslo.

- **By boat**

The coastal route docks at the harbour 400 metres from the hotel. There are departures to Bergen in the west Kirkenes in the north.



Radisson SAS Royal Garden Hotel
 Kjøpmannsgt. 73, P.O. Box 956
 7010 Trondheim, Norway
 Tel: + 47 73 80 30 00, Fax: + 47 73 80 30 50
www.radissonsas.com

Radisson SAS
 HOTELS & RESORTS

Radisson SAS Royal
Garden Hotel,
Trondheim

MEETING PLANNER GUIDE



Welcome



The Radisson SAS Royal Garden Hotel is located on the bank of the river Nidelven, in the centre of the historical city of Trondheim. It is the largest hotel in Trondheim, both with respect to conference capacity and number of rooms. Large indoor garden areas, a variety of restaurants and a health centre with a swimming pool ensure that our guests are comfortable and that their expectations are fulfilled. The hotel is centrally located with respect to shopping areas, entertainment and transport. The airport bus stops right outside the hotel on its way to and from the airport.





Rooms

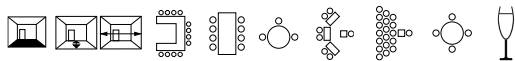
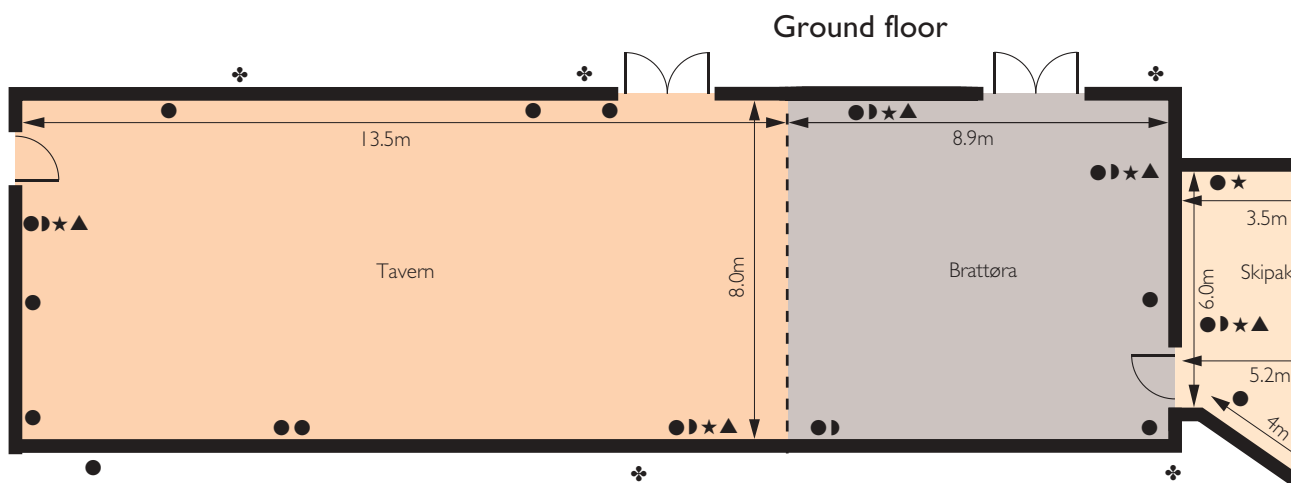
The rooms are located well away from the bar and restaurants, ensuring a good night's rest. Some of our 298 rooms face the indoor gardens and others have a river view. All the rooms are equipped with a bathroom, hair dryer, colour TV, trouser press and desk. There are 9 suites, of which "Leiv Eriksson" is the largest. In this suite, both the sitting room and the bedroom are equipped with large windows, overlooking Trondheims fjord.



Conference facilities



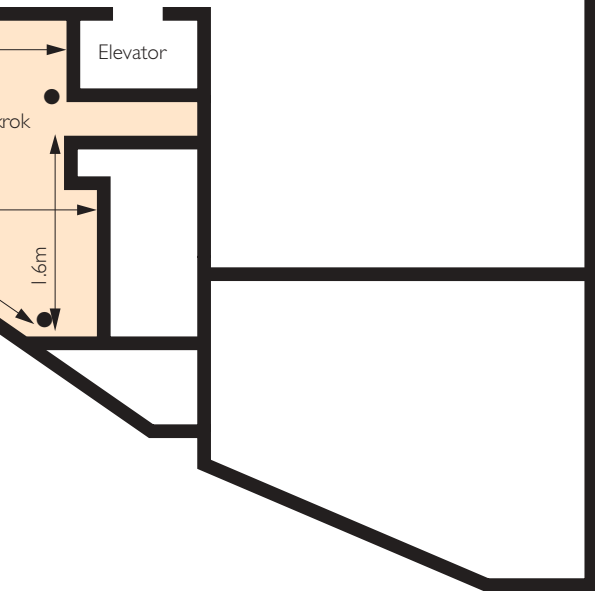
The Radisson SAS Royal Garden Hotel has the most extensive conference facilities in Trondheim, with a conference centre covering 1,300 square metres. Here we can arrange anything from small meetings for as few as two persons to large congresses for anywhere up to 650 people. The conference hall and function rooms are located close to each other and have large windows providing plenty of natural light and good working conditions. We can also provide the ideal setting for banquets and dinners for up to 1000 people in our conference centre. For smaller arrangements the Cicignon restaurant alongside the river Nidelven is the perfect choice, accommodating up to 230 people.



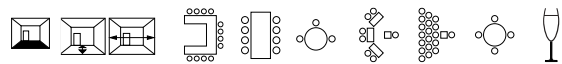
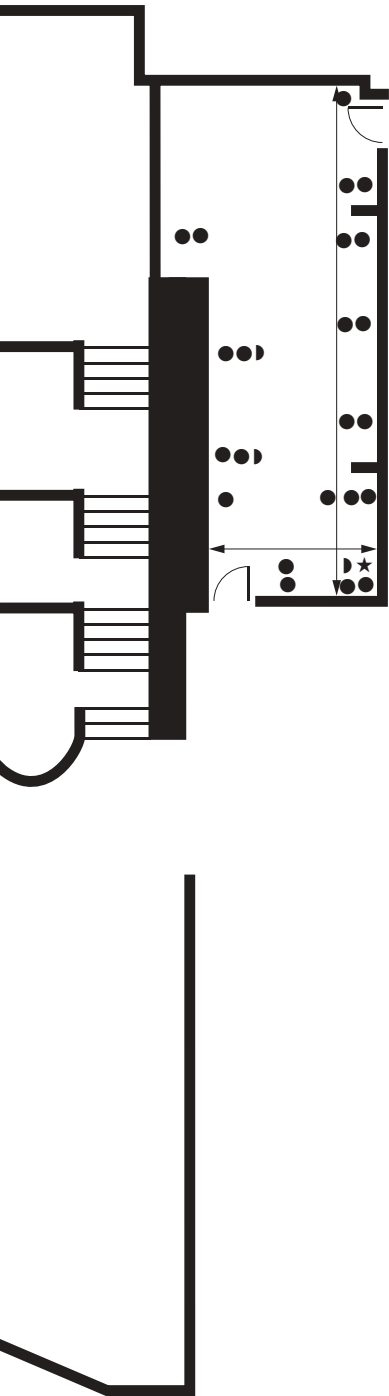
	Floor area m ²	Length and width	U - Shape	Boardroom	Cabaret	Classroom	Theatre	Dinner	Reception
Tavern	108	13,5 X 8	30	35	-	70	110	80	150
Brattøra	71	8,9 X 8	25	20	-	47	60	50	100
Tavern + Brattøra	179	22,4 X 8	50	55	-	120	210	140	250
Skipakrok	35	6 X 5,5	-	10	-	-	-	10	-
Rosenborg	78	15 X 5,25	20	20	-	30	50	-	-
Galleriet(utstilling)	44	7,40 X 6	-	-	-	-	-	-	60
G1 (Utst.)	10	2 X 5	-	-	-	-	-	-	-
G2 (Utst.)	15	5 X 3	-	-	-	-	-	-	-

Key

- ❖ Single 13 amp socket
- Double 13 amp socket
- ❖ 3 phase power supply
- ▶ Telephone socket
- ★ Aerial socket
- ▲ Microphone socket



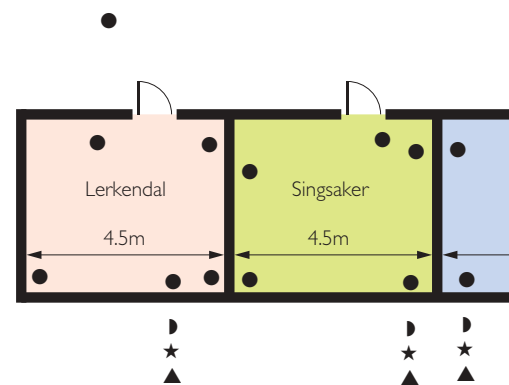


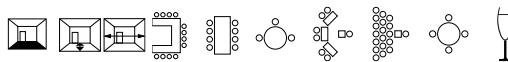
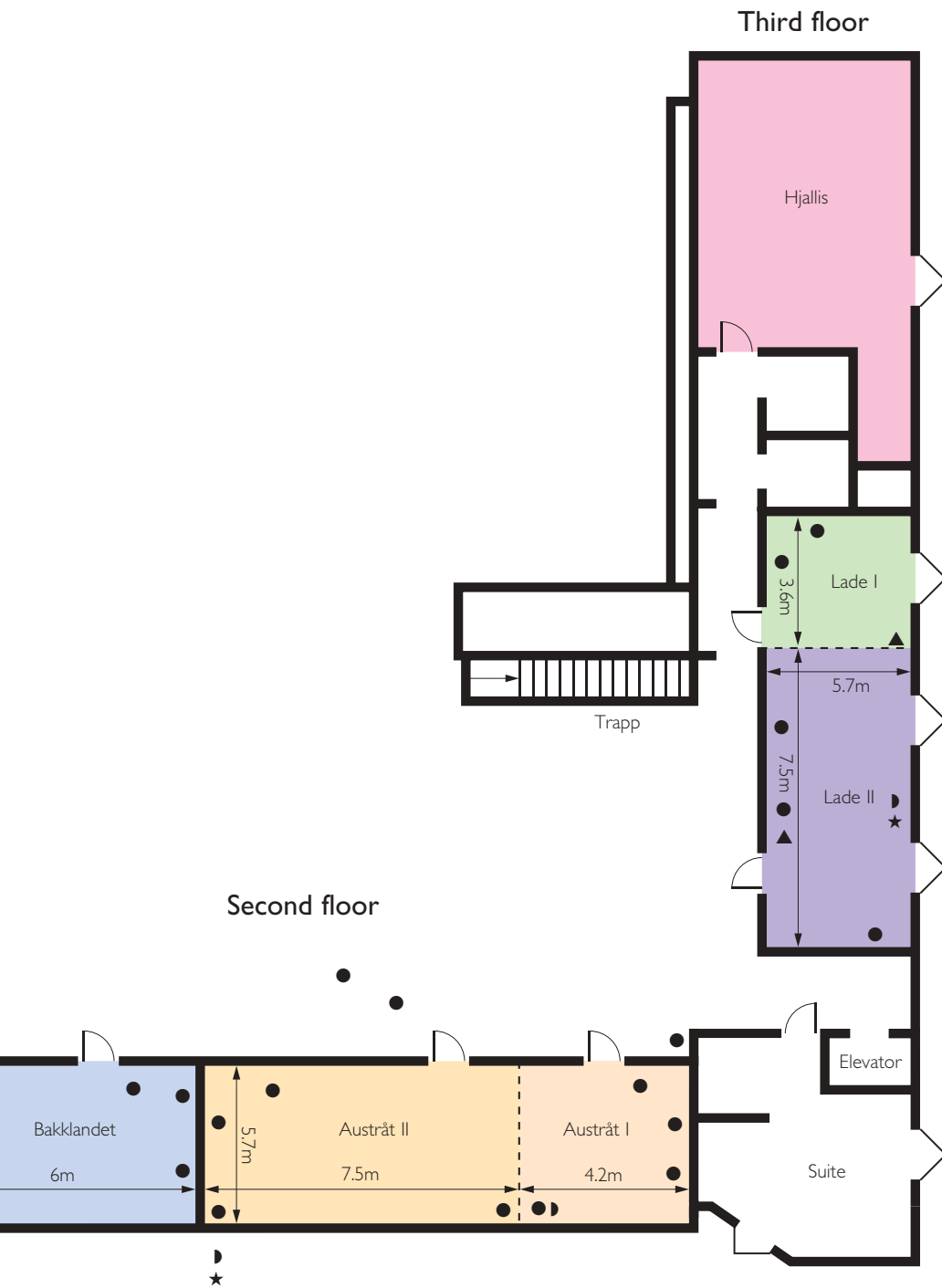


	Floor area m ²	Length and width	U - Shape	Boardroom style	Cabaret	Classroom	Theatre	Dinner	Reception
Olav Tryggvasson	390	16 X 25,3	70	-	250	280	650	400	650
Olav Tryggvasson II	260	15,5 X 17	54	-	120	180	325	250	420
Haraldsalen	130	16,5 X 8,3	40	35	-	80	140	100	200
Sverresborg	58	9 X 6,5	18	20	-	32	60	60	85
Sverresborg I/II	29	4,5 X 6,5	-	12	-	-	20	20	-
Kristiansten	59	9 X 6,5	18	20	-	32	60	60	85
Kristiansten I/II	29	4,5 X 6,5	-	12	-	-	20	20	-
Munkholmen	39	7,8 X 5	-	12	-	-	20	-	-
Foaje	215	33 X 6,5	-	-	-	-	-	-	400

Key

- ❖ Single 13 amp socket
- Double 13 amp socket
- ⚡ 3 phase power supply
- ☎ Telephone socket
- ★ Aerial socket
- ▲ Microphone socket





	Floor area m ²	Length and width	U - Shape	Boardroom	Cabaret	Classroom	Theatre	Dinner	Reception
Lade	63,5	5,7 X 11,1	14	14	-	25	40	-	-
Lade II	43	5,7 X 7,5	-	10	-	-	-	-	-
Lade I	20,5	5,7 x 3,6	-	8	-	-	-	-	-
Austråt	67	11,7 X 5,7	18	18	-	30	50	30	-
Austråt I	24	4,2 X 5,7	-	8	-	-	-	-	-
Austråt II	43	7,5 X 5,7	-	12	-	-	-	-	-
Bakklandet	34	6 x 5,7	-	10	-	-	-	-	-
Singsaker	26	4,5 X 5,7	-	8	-	-	-	-	-
Lerkendal	26	4,5 X 5,7	-	8	-	-	-	-	-
Hjallis									

Key

- ❖ Single 13 amp socket
- Double 13 amp socket
- ⚡ 3 phase power supply
- ☎ Telephone socket
- ★ Aerial socket
- ▲ Microphone socket

Food & entertainment



The Prins Olav Grill is the hotel's main restaurant and the meals prepared here are based exclusively on ingredients of the best possible quality. The restaurant is named after The Prins Olav, which was a ship owned by the British royal family. Original ornaments from the ship have been used to decorate the restaurant, where you can feel safely "on board" and well taken care of. The restaurant Bakkus Mat & Vin (Bakkus Food & Wine) is located in the middle atrium of the hotel, overlooking the river Nidelven. Here, breakfast, sandwiches and hot dishes are served in an informal atmosphere. The Galleriet bar is strategically located in the hotel lobby, with an excellent view of everything that is going on. This is the hotel's natural meeting point. Our jazz and blues club, the Blue Garden, offers live music several nights a week.



Fitness & relaxation



In the hotel's recreation centre, there is a swimming pool, a jacuzzi, saunas, gym equipment and sunbeds. Start the morning with a dip in the pool or relax after a long day! Because of its excellent location near the river Nidelven, the hotel is a good starting point for walks along the river to charming Bakklandet and the Nidaros Cathedral. This route is also recommended for running. During the season, you can rent fishing rods at the hotel and try your luck in the river. Golf equipment is also available for hire.



Trondheim city facts



Trondheim has 150 000 inhabitants and is the third largest city in Norway. It was founded in the year 997 and is the second oldest city in the country. The Nidaros Cathedral, which is one of the largest medieval buildings in Scandinavia, was erected in the 11th Century, above the grave of St. Olav. The Norwegian royal regalia, which are exhibited from time to time, are stored here.

Other popular spots for sightseeing include the Ringve Museum for Music History and the Trøndelag National Museum.

Stiftsgården is the largest wooden building in Scandinavia. It was built as a private house during the years 1774-78, and is today the royal residence in Trondheim.

Trondheim offers a wide variety of restaurants, serving Norwegian as well as international cuisine. You will also find good quality shops in Trondheim. Things to buy include silver jewellery, knitted clothes, glass, pewter and other quality souvenirs made by skilful Norwegian craftsmen.

